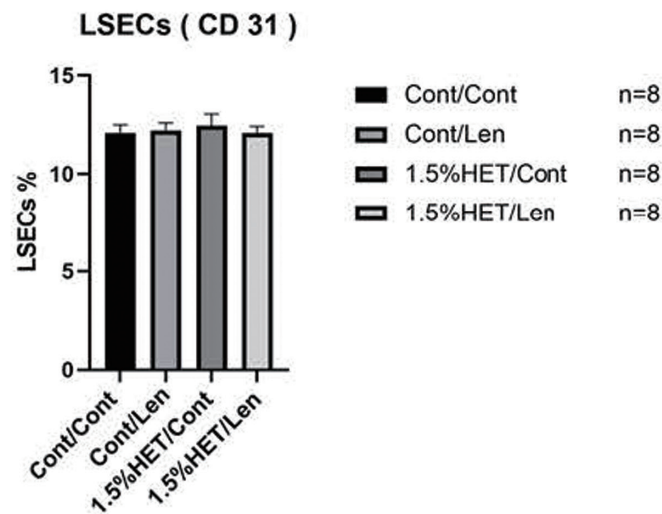
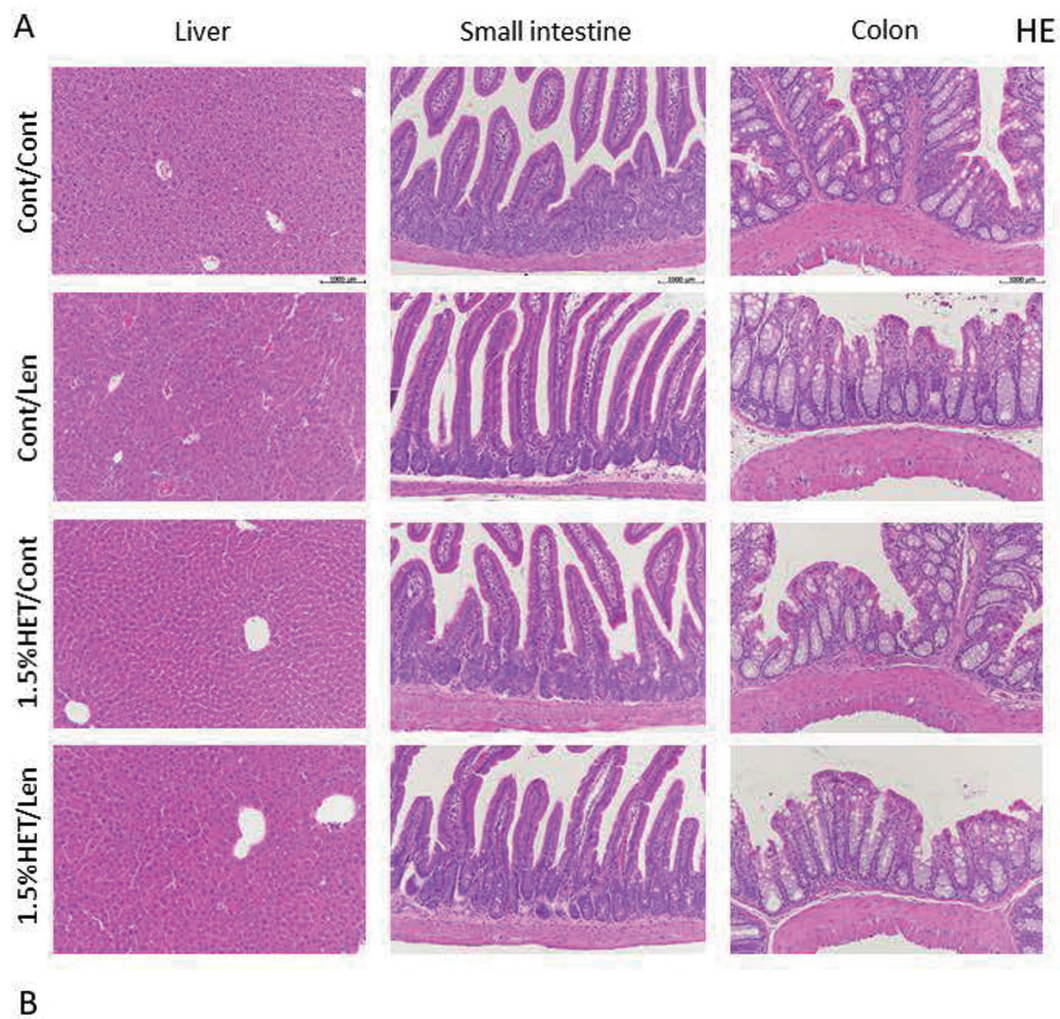


Supplementary Figure S1. Histological analysis of small intestine samples. Samples were collected at the end of the preliminary study (day 14) and stained with hematoxylin and eosin.



Supplementary Figure S2. Histological analysis of tissue samples. (A) Samples of the middle lobe of the liver (left panels), small intestine (middle panels), and colon (right panels) were collected at the end of the study (day 42) and stained with hematoxylin and eosin. (B) ImageJ software was used to analyze the percentage of liver sinusoidal endothelial cells (LSECs) in the middle lobe of the liver.