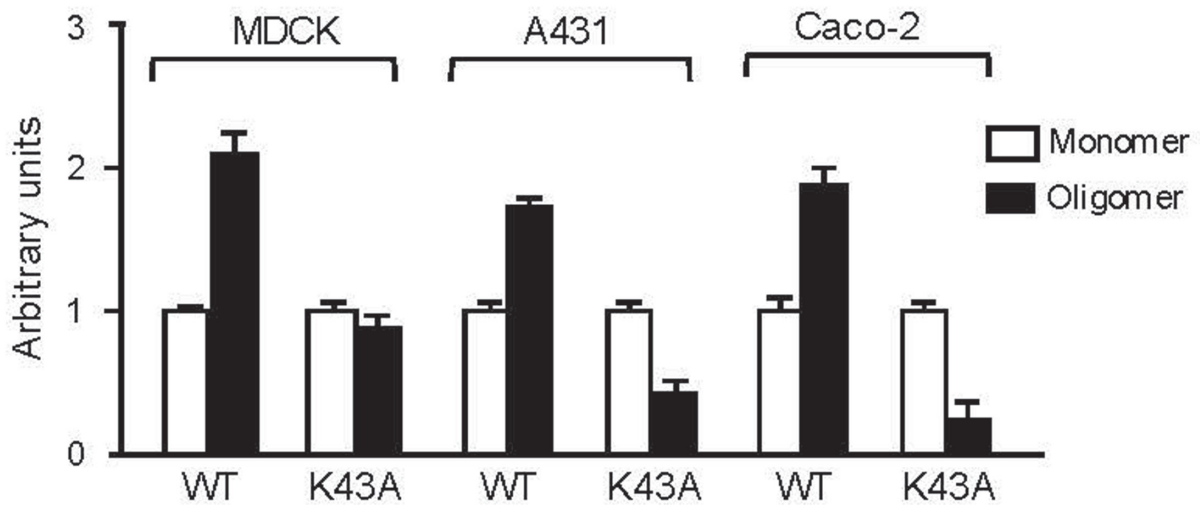


**Supplementary Fig. S1. SDS-PAGE analysis of purified wild-type delta-toxin and variant toxins.**

Purified samples (2.5  $\mu\text{g}$  of protein each) were analyzed by SDS-PAGE (10% polyacrylamide). The gel was stained with 1% (wt/vol) Coomassie brilliant blue. Lane M: protein marker (molecular mass is shown in kDa to the left); lane 1: wild-type delta-toxin; lane 2: K43A; lane 3: S109A; lane 4: R200A



**Supplementary Fig. S2. Oligomerization of wild-type delta-toxin and K43A in MDCK, A431 and Caco-2 cells.**

Results from Figure 2A and B, signal intensities of oligomer and monomer bands from immunoblots were recorded by densitometrically. The bands of wild-type delta-toxin and K43A (10  $\mu\text{g}$  of protein each) were analyzed. The monomer level of the toxin was set to 1. Values represent means  $\pm$  SD obtained from three independent experiments.