

Fig. S1. Cre-mediated *Rab7* Deletion (Modified from Ref. 2).²⁾

The wild-type and modified versions of the mouse *Rab7* locus are shown. Positions of the exons are shown by vertical bars. The *loxP* sites are shown by black triangles.

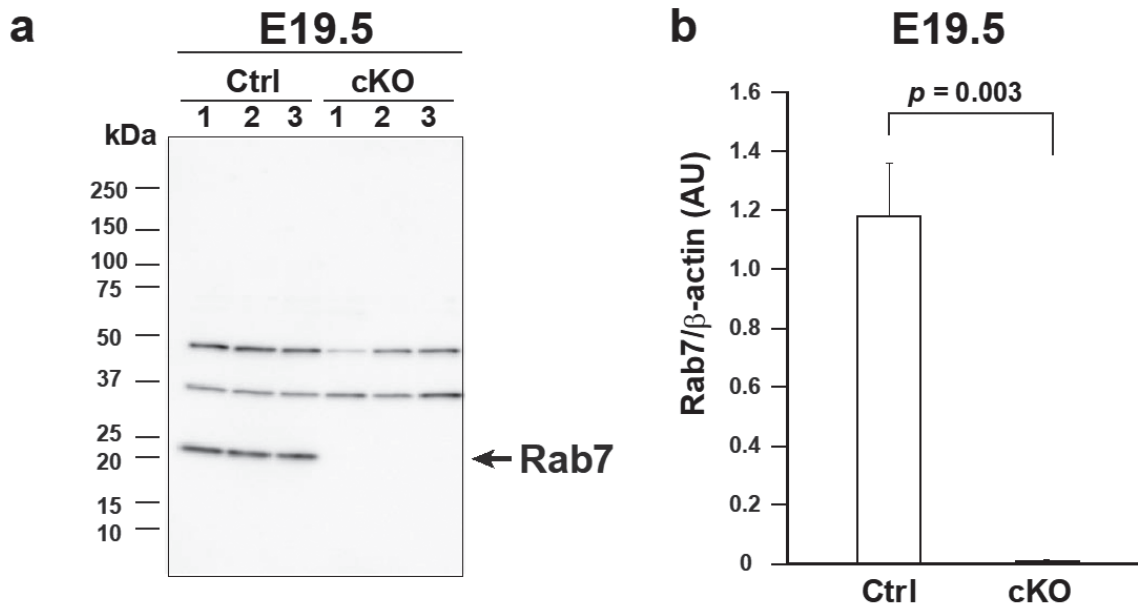


Fig. S2. Western Blotting Analysis of Rab7 in E19.5 Mucosa

The mucosa lysates prepared from *Rab7^{fl/fl}* mice and *Rab7^{fl/fl} VilCre^{tg/+}* were examined using immunoblotting (a). The relative amount of Rab7 was shown in b. The error bars denote the SEM and *p* value is shown in the graph.

Table S1

Primer set	Allele			Sex	
	<i>Rab7</i> ⁺	<i>Rab7</i> ^{fl}	<i>VilCre</i> ^{Tg/+}	Male	Female
Rab7-S15, Rab7-A16	321 bp	831 bp			
Cre-Fw, Cre-Rv			369 bp		
Zfy-Fw2, Zfy-Rv2				195 bp	

Table S2

Primer	Sequence	Description
Rab7-S15	5'- GGATAAAATAGCAGTAAAAGCACGGTCGGG-3'	<i>Rab7</i> intron 3-4, sense strand
Rab7-A16	5'- GGTGGATTTTCTGAGTTTGAGGCCAGCCT-3'	<i>Rab7</i> intron 3-4, antisense strand
Cre-Fw	5'- ACCTGAAGATGTTTCGCGATTATCT -3'	Bacteriophage P1, Cre recombinase sense strand
Cre-Rv	5'- ACCGTCAGTACGTGAGATATCTT -3'	Bacteriophage P1, Cre recombinase antisense strand
Zfy-Fw2	5'-TGGGTAGCCACATGCTTCTTGA-3'	Mouse Y chromosome, Zfy1 locus sense strand
Zfy-Rv2	5'-GGCTCAGCAACATGCCGTTCT-3'	Zfy1 locus antisense strand